



charge force **desk mount**

Compatible with mophie cases with

**charge force** wireless power

---

USER MANUAL

## Welcome

Thank you for purchasing the mophie **charge force** desk mount. The desk mount is compatible with mophie cases with **charge force** wireless power, providing hands-free charging and allowing you to use your device in either portrait or landscape orientation.

## Package Contains

- mophie **charge force** desk mount
- Micro-USB cable

## Features

- The **charge force** desk mount firmly holds a compatible mophie case on the charger and automatically aligns it for a proper charge.
- Wireless charging—simply place a compatible device against the desk mount to immediately begin recharging.
- Anti-skid base keeps the desk mount steady on smooth surfaces.
- Easily rotatable to either landscape or portrait orientation.
- Includes micro-USB cable for connecting to a high-current USB wall charger (1.8A or higher, not included).
- The white LED illuminates continually during wireless charging, and flashes to indicate a charging problem or insufficient current to the desk mount.

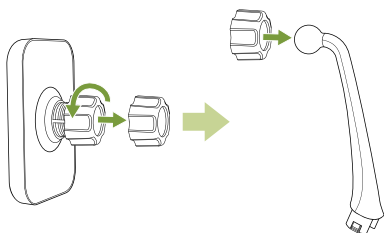
## Compatibility

The mophie **charge force** desk mount will wirelessly charge any mophie juice pack case with **charge force** wireless power, including **juice pack** wireless cases for iPhone 6s Plus, iPhone 6 Plus, iPhone 6s and iPhone 6, and **juice pack** cases for Samsung Galaxy S®7 and Galaxy S7 edge.

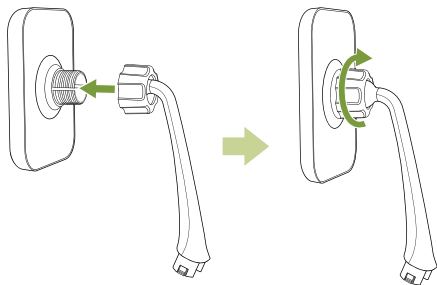
Do not attempt to use the **charge force** desk mount with wireless-charging devices that are not Qi-compatible.

## Assembly & Connections

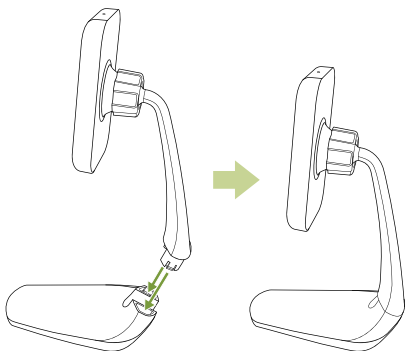
1. Unscrew the collar from the back of the desk mount and place it on the ball end of the arm.



2. Insert the ball end of the arm into the fitting on the back of the desk mount and tighten the collar around the fitting to secure the arm.

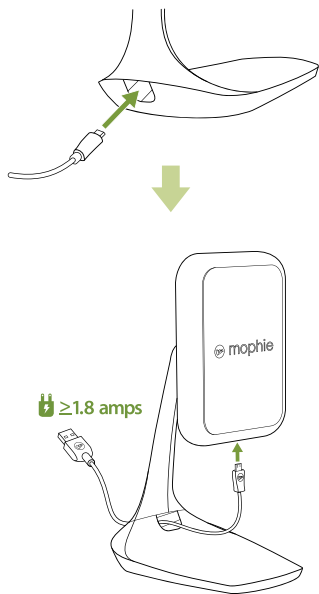


3. Insert the tabs at the bottom of the arm into the openings on the base so that the arm snaps into place. NOTE: This connection is permanent. Once you assemble the base you cannot disassemble it.



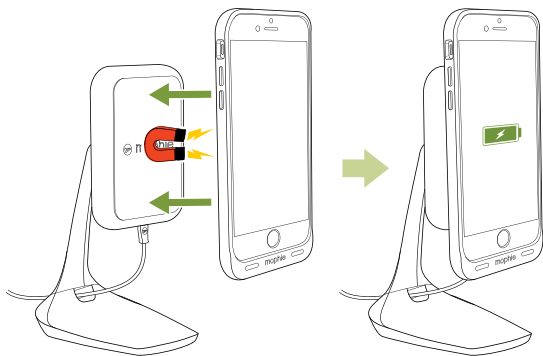
4. Pass the included cable's micro-USB jack through the rear of the opening on the desk mount base and connect it to the port on the bottom of the desk mount charging pad. Connect the cable's larger USB jack to a wall-charging adapter with at least a 1.8-amp output.

**IMPORTANT:** Do not connect the desk mount to a computer's USB port.

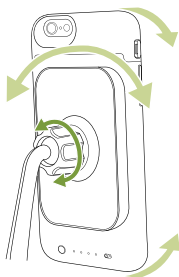


## Using the *charge force* desk mount

Place your compatible **charge force** device against the **charge force** desk mount. The mount will securely hold the device and automatically align it for a proper charge. Charging will automatically begin when the device is aligned on the mount.



Loosen the collar on the back of the desk mount to adjust the pad to the most convenient position (you can adjust the pad so your device is in either portrait or landscape position), then firmly tighten the collar to secure the mount.



## **Warranty**

At mophie, we are dedicated to making the best quality products we can. To back this up, this product is warranted for 2 years from date of purchase. This warranty does not affect any statutory rights that you may be entitled to. Keep a copy of your purchase receipt as proof of purchase. Be sure to register your product at [mophie.com](http://mophie.com). Failure to register your product and/or provide proof of purchase may void the warranty.

## **Exclusions & Limitations**

Except for the limited warranty expressly set forth or to the extent restricted or prohibited by

applicable law, mophie expressly disclaims any and all other warranties express or implied, including any warranty of quality, merchantability, or fitness for a particular purpose, and you specifically agree that mophie shall not be liable for any special, incidental, indirect, punitive, or consequential damages for breach of any warranty of any type on any mophie product. In addition to and without limiting the generality of the foregoing disclaimers, the limited warranty does not, under any circumstances, cover the replacement or cost of any electronic device or personal property inside or outside of the mophie product.

### **Customer Service**

Telephone: 1-888-8mophie

International: +1 (269) 743-1340

Web: [www.mophie.com/cs](http://www.mophie.com/cs)

### **Warning**

Read all instructions and warnings prior to using this product. Improper use of this product may result in product damage, excess heat, toxic fumes, fire or explosion, for which damages you ("Purchaser"), and not mophie llc ("Manufacturer") are responsible.

- ☠ Do not store device in high-temperature environment, including heat caused by intense sunlight or other forms of heat. Do



not place device in fire or other excessively hot environments.

- X- Do not disassemble this device or attempt to re-purpose or modify it in any manner.
- X- Do not attempt to power this device using any method, apparatus, or connection other than the device's micro-USB connector. For questions or instructions for the various ways to power the device refer to the illustrations in the *Assembly & Connections* section of this user manual.
- X- Do not attempt to replace any part of this device.
- X- If this device is intended by Purchaser to be used by a minor, purchasing adult agrees to provide detailed instructions and warnings to any minor prior to use. Failure to do so is sole responsibility of purchaser, who agrees to indemnify Manufacturer for any unintended use/misuse by a minor.
- X- All products have gone through a thorough quality assurance inspection. If you find that your device is excessively hot, is emitting odor, is deformed, abraded, cut or is experiencing or demonstrating an abnormal phenomenon, immediately stop all product use and contact Manufacturer.
- X- This product contains chemicals known to the state of California to cause cancer and birth defects or other reproductive harm.

## Legal

This product is meant for use only in conjunction with the appropriate device. Please consult your device packaging to determine whether this product is compatible with your particular device. Manufacturer is not responsible for any damages to any device incurred through the use of this product.

Manufacturer shall not in any way be liable to you or to any third party for any damages you or any third party may suffer as a result of use, intended or unintended, or misuse of this product in conjunction with any device or accessory other than the appropriate device for which this product is designed. Manufacturer will not be responsible for any damages you or any third party may suffer as a result of misuse of this product as outlined above. If you are responsible for product use with an unintended device and damages result from such use, you agree to indemnify Manufacturer for any resulting injuries to any third part(ies).

mophie, charge force, Stay Powerful, and the mophie logo are trademarks of mophie inc. iPhone is a trademark of Apple Inc., registered in the U.S. and other countries. The trademark "iPhone" is used with a license from Aiphone K.K. Samsung and Galaxy S are trademarks of Samsung Electronics Co., Ltd. Patents: [mophie.com/patents](http://mophie.com/patents).

This device complies with part 15 of the FCC Rules and RSS-Gen of IC Rules. Operation is subject to the following two conditions: (1) This device may not cause harmful interference, and (2) this device must accept any interference received, including interference that may cause undesired operation.

NOTE: This equipment has been tested and found to comply with the limits for a Class B digital device, pursuant to part 15 of the FCC Rules. These limits are designed to provide reasonable protection against harmful interference in a residential installation. This equipment generates, uses, and can radiate radio frequency energy and, if not installed and used in accordance with the instructions, may cause harmful interference to radio communications. However, there is no guarantee that interference will not occur in a particular installation.

If this equipment does cause harmful interference to radio or television reception, which can be determined by turning the equipment off and on, the user is encouraged to try to correct the interference by one or more of the following measures:

- Reorient or relocate the receiving antenna.
- Increase the separation between the equipment and receiver.

- Connect the equipment into an outlet on a circuit different from that to which the receiver is connected.
- Consult the dealer or an experienced technician for help.

**CAUTION:** To comply with the limits of the Class B digital device, pursuant to Part 15 of the FCC Rules, this device must be used with certified peripherals and shielded cables. All peripherals must be shielded and grounded. Operation with non-certified peripherals or non-shielded cables may result in interference to radio or reception.

**MODIFICATION:** Any changes or modifications of this device could void the warranty.

 STAY POWERFUL™